

Ocean Racing Leadership Challenge™

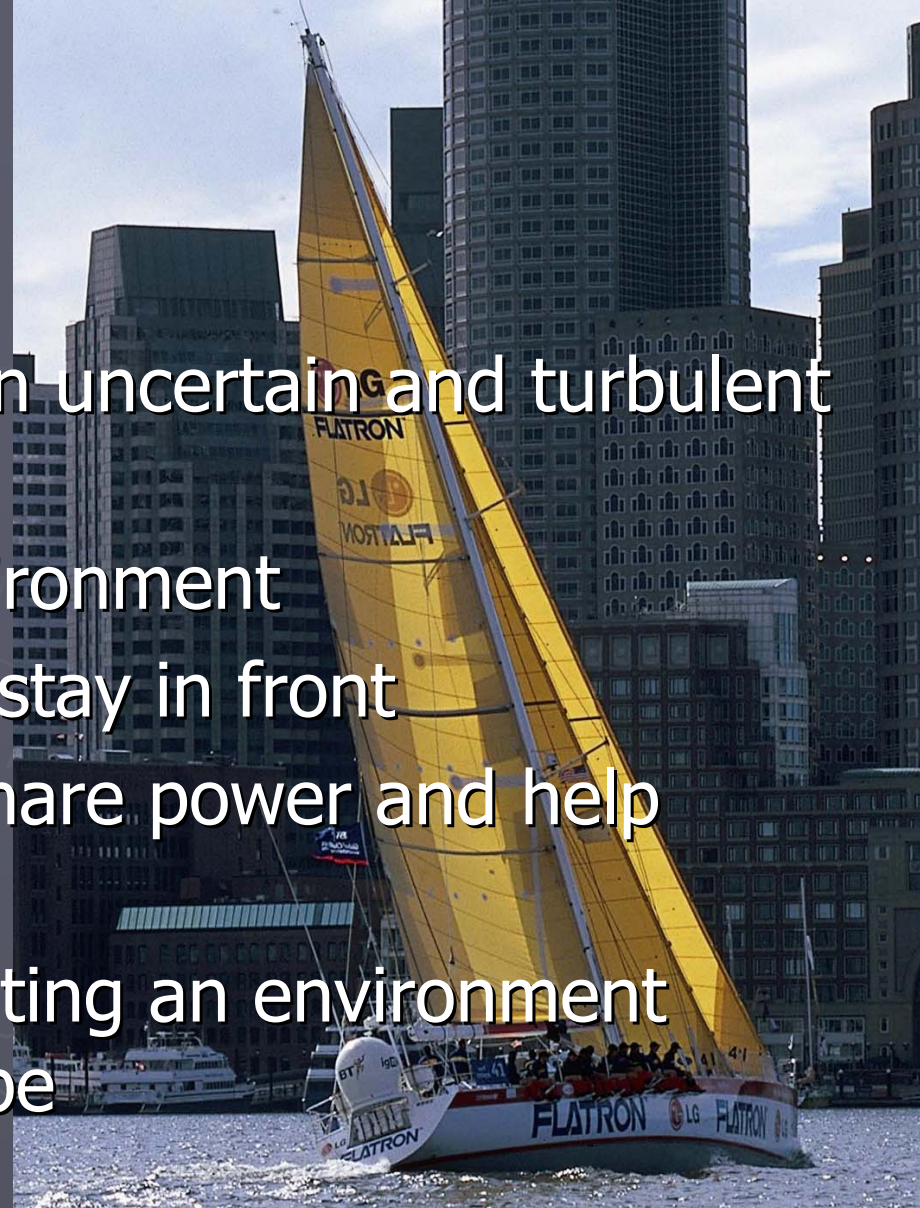
Innovation in Leadership Performance

Presented by
Conrad Humphreys
and Jane Cranwell-Ward



Leaders in today's world face...

- ▶ Being able to cope in an uncertain and turbulent world
- ▶ A rapidly changing environment
- ▶ Having to take risks to stay in front
- ▶ Learning the need to share power and help others to develop
- ▶ The importance of creating an environment where people want to be



Ocean Racing Leadership Challenge™

- ▶ Leadership remains the single most important factor in driving business performance
- ▶ Learning through experience provides the greatest inspiration and proves to be of most value to today's leaders



EMEA Motorola



"I want to pass our thanks to you for putting together an outstanding business simulation. This is new ground with our senior team who all - as you know - remained attentive, competitive, energized and above all took some profound learning back to Motorola. You made a real difference!"

Steve Mostyn, Office of Leadership Motorola



BT Global Challenge

a metaphor for business leadership

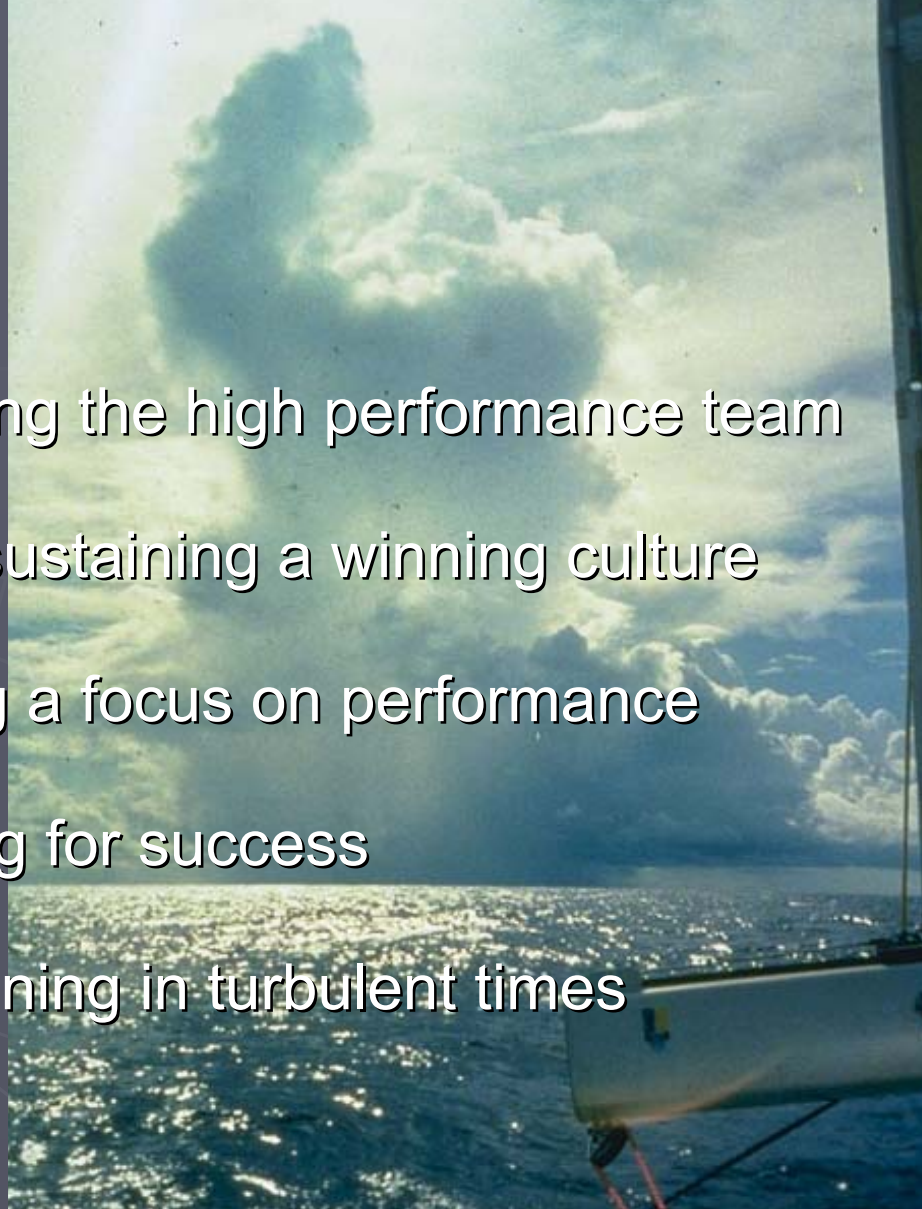
Leading and building the high performance team

Creating and sustaining a winning culture

Maintaining a focus on performance

Planning for success

Winning in turbulent times



How does it work?

- ▶ Key leadership scenarios and critical instances are selected in consultation with the client organisation
- ▶ Participants competing in teams take decisions on real scenarios that parallel situations faced by the client organisation
- ▶ Performance is measured by assessing each team's responses and awarding points accordingly
- ▶ The results are displayed graphically to show leg and overall race positions
- ▶ Teams are also given the opportunity to review their own leadership and team performances and share their experiences

Activity	Description	Points	Progress
1. Introduction	Introduction to the challenge and the teams.		
2. Scenario 1	Scenario 1: A crisis situation where the team must decide on the best course of action.		
3. Scenario 2	Scenario 2: A crisis situation where the team must decide on the best course of action.		
4. Scenario 3	Scenario 3: A crisis situation where the team must decide on the best course of action.		
5. Scenario 4	Scenario 4: A crisis situation where the team must decide on the best course of action.		
6. Scenario 5	Scenario 5: A crisis situation where the team must decide on the best course of action.		
7. Scenario 6	Scenario 6: A crisis situation where the team must decide on the best course of action.		
8. Scenario 7	Scenario 7: A crisis situation where the team must decide on the best course of action.		
9. Scenario 8	Scenario 8: A crisis situation where the team must decide on the best course of action.		
10. Scenario 9	Scenario 9: A crisis situation where the team must decide on the best course of action.		
11. Scenario 10	Scenario 10: A crisis situation where the team must decide on the best course of action.		
12. Scenario 11	Scenario 11: A crisis situation where the team must decide on the best course of action.		
13. Scenario 12	Scenario 12: A crisis situation where the team must decide on the best course of action.		
14. Scenario 13	Scenario 13: A crisis situation where the team must decide on the best course of action.		
15. Scenario 14	Scenario 14: A crisis situation where the team must decide on the best course of action.		
16. Scenario 15	Scenario 15: A crisis situation where the team must decide on the best course of action.		
17. Scenario 16	Scenario 16: A crisis situation where the team must decide on the best course of action.		
18. Scenario 17	Scenario 17: A crisis situation where the team must decide on the best course of action.		
19. Scenario 18	Scenario 18: A crisis situation where the team must decide on the best course of action.		
20. Scenario 19	Scenario 19: A crisis situation where the team must decide on the best course of action.		
21. Scenario 20	Scenario 20: A crisis situation where the team must decide on the best course of action.		



Presenting the Leadership Challenge

► Conrad Humphreys

In June 2001, 28 year old Conrad Humphreys skippered LG FLATRON to victory in the BT Global Challenge 2000/01. He and his team won four out of the seven legs of the race and took podium positions in a further two legs. Since leading LG to victory, Conrad has been speaking to organisations all over the world about his experiences. His clients in 2002 have included UBS Warburg, BT, GSK, Yell, Pfizer, Microsoft and Motorola.

► Jane Cranwell-Ward

As Director of the Henley Learning Partnership, Jane specialises in leadership, team building, stress management, managing change, and developing managerial effectiveness. In 2000/1 Jane represented Henley as a member of the research team investigating how leaders inspire and sustain high performance focusing on the BT Global Challenge Round the World Yacht Race. She subsequently co-authored the definitive book on high performance leadership, entitled "Inspiring Leadership – Staying Afloat in Turbulent Times" (2001)



Programme Details

Ocean Racing Leadership Challenge™

All of our programmes are developed through consultation with the client organisation. The challenges selected and exercises created then address the particular Team and Leadership behaviours that are of your highest priority.

A Typical programme will include the following:

- *An evening visiting the yachts in Southampton*
- *An after dinner presentation*
- *A full day's training on the Leadership Challenge™*
- *Delegates' training packs*

Optionally, the ocean racing leadership challenge™ can be further enhanced with a day's sailing on the Global Challenge racing yachts



Contact details

O6T Limited

Conrad Humphreys

Tel: +44 (0) 7720 287674

Email: conrad@o6t.com

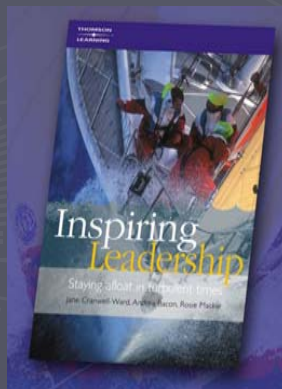
<http://www.o6t.com>

Cranwell-Ward Development

Jane Cranwell-Ward

Tel: +44 (0) 7887 552355

Email: jcwdev@btinternet.com



Book details:

Inspiring Leadership – Staying Afloat in
Turbulent Times,

Cranwell-Ward, Bacon and Mackie, 2002

